

ASTROPHYSICS INC.

ASTROPHYS

peo  DETECTION

Table of contents

Mobile Detection System	4
XIS-MINIVAN - Astrophysics	5
XIS-TRAILER - Astrophysics	6
XIS-TRUCK - Astrophysics	7
X-ray Inspection	8
XIS-6040 - Astrophysics	9
XIS-6040M - Astrophysics	10
XIS-6040N - Astrophysics	11
XIS-6040NM - Astrophysics	12
XIS-5335S - Astrophysics	13
XIS-6040SE (Event Edition) - Astrophysics	14
XIS-6545 - Astrophysics	15
6545VI - Astrophysics	16
VI7 - Astrophysics	17
7858VI - Astrophysics	18
XIS-1517DV 320kV - Astrophysics	19
XIS-1517DV 200kV - Astrophysics	20
XIS-1517 320kV - Astrophysics	21
XIS-1517 200kV - Astrophysics	22
XIS-100XDV-MD - Astrophysics	23
XIS-100XDV - Astrophysics	24
XIS-100XDX - Astrophysics	25
XIS-1818DV 320kV - Astrophysics	26
XIS-100XD - Astrophysics	27
XIS-100X - Astrophysics	28
XIS-1818DV 200kV - Astrophysics	29
XIS-1818 320kV - Astrophysics	30
XIS-1080D - Astrophysics	31
XIS-1080 - Astrophysics	32
XIS-7858 - Astrophysics	33
XIS-7555R - Astrophysics	34
XIS-5878 - Astrophysics	35
XIS-6545DV - Astrophysics	36
XIS-6040 VI-3D small parcel scanner(Semi-3D)	37
XIS-1819 200kV - Astrophysics	38
XIS-1818 200kV - Astrophysics	39
HXC-320 - Astrophysics	40
HXP - Astrophysics	41
Multi-View CT System: MVCT Cargo and Pallet Inspection Scanner	42

Astrophysics Inc.

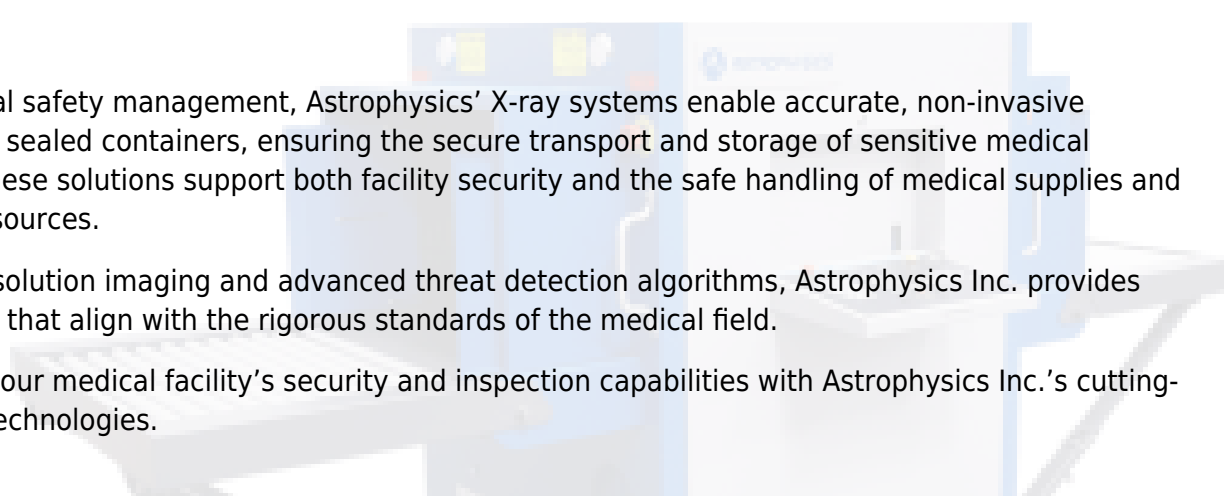


Astrophysics Inc. delivers state-of-the-art X-ray inspection systems that play a critical role in safeguarding healthcare environments. Their technology is used in hospitals and medical facilities to screen incoming goods, equipment, and waste for concealed threats, enhancing overall safety and regulatory compliance.

In radiological safety management, Astrophysics' X-ray systems enable accurate, non-invasive inspection of sealed containers, ensuring the secure transport and storage of sensitive medical materials. These solutions support both facility security and the safe handling of medical supplies and radiological sources.

With high-resolution imaging and advanced threat detection algorithms, Astrophysics Inc. provides reliable tools that align with the rigorous standards of the medical field.

Strengthen your medical facility's security and inspection capabilities with Astrophysics Inc.'s cutting-edge X-ray technologies.



MOBILE DETECTION SYSTEM



← [Back to partner](#)



Security Detection › Mobile Detection System

XIS-MINIVAN - Astrophysics

The XIS-Minivan is the newest model in the XIS-Series Mobile Screening product line featuring a tunnel size of 100 cm x 100 cm. With an even smaller vehicle profile than the XIS-Van, the XIS-Minivan is the mobile screening solution suited for areas where space is limited, but the need for security is absolute.



The XIS-Minivan mobile screening vehicle features unmatched standards, including a high-powered 180kV generator, Air Conditioning and Exterior Lighting. The XIS-Minivan requires minimal set-up time and features a more compact vehicle with a large tunnel for diverse object screening at any locale.

General Specifications XIS-MINIVAN

- **Tunnel Size (W x H):** 100 cm x 100 cm
- **Dimensions (L x W x H):** 604 cm x 202.4 cm x 277 cm
- **X-ray Generator:** 180kV, Operating at 165kV

← [Back to partner](#)



[Security Detection](#) › [Mobile Detection System](#)

XIS-TRAILER - Astrophysics

The XIS Trailer has a tunnel size of 100 cm x 100 cm and is the ideal solution for flexible screening. It has durable aluminum walls and roofing on a custom steel frame construction. The XIS Trailer is suitable for both indoor and outdoor applications.



Significantly, this mobile screening vehicle is the first in its class in terms of standard equipment. The XIS Trailer is equipped with a powerful 180 kV generator, air conditioning, exterior lighting and uninterrupted power supply.

The XIS Trailer offers a mobile solution for security gaps and has extensive standard facilities and an enlarged tunnel for more diverse screening.

General specifications XIS TRAILER

Tunnel size (W x H): 100 cm x 100 cm

Dimensions (L x W x H): 623.8 cm x 228.6 cm x 352.2 cm

X-ray generator: 180 kV, operating at 165 kV

← [Back to partner](#)



Security Detection > Mobile Detection System

XIS-TRUCK - Astrophysics

With a tunnel opening of 101.6 cm x 81.4 cm, the XIS-Truck can screen diverse parcels, baggage and cargo for explosives and contraband. The XIS-Truck is designed for outside events, border checkpoints, and various mobile screening needs.



The X-ray system is custom built into a Ford F-450 Super Duty Truck complete with cabin air conditioning, a 6.2L V8 engine and the Ford Personal Safety System.

The XIS-Truck features a high performance vehicle, a state-of-the-art XIS system, extended conveyor belt, and custom retractable awnings and built-in Monitor Stand for fast and convenient screening.

All Astrophysics X-ray Inspection Systems are equipped with Real-Time Diagnostics, a unique Astrophysics feature which allows users to monitor system health. This software was specifically engineered to save you valuable time and money. If requested, Astrophysics would also be able to connect to your system and troubleshoot any issues remotely.

An exclusive Astrophysics option is our 6 Color Imaging, which enables operators to view screened objects in 6 colors, each color correlating to a specific range of Atomic Z-Numbers. 6 Color Imaging enables operators to achieve optimal material identification which improves throughputs.

General Specifications XIS-TRUCK

- **Tunnel Size (W x H):** 100 cm x 100 cm
- **Dimensions (L x W x H):** 724 cm x 243.8 cm x 342.3 cm
- **X-ray Generator:** 180kV, Operating at 165kV

X-RAY INSPECTION



← [Back to partner](#)



[Security Detection](#) › [X-ray Inspection](#)

XIS-6040 - Astrophysics

The XIS-6040 X-Ray Inspection System features a tunnel opening of 60 x 40 cm. The XIS-6040 offers a compact design with increased dimensions for a wider range of placement and expanded screening capability. The XIS-6040 is ideal for both small parcel and checkpoint screening.



The XIS-6040 has found placement at hotels, prisons, government sites, and transportation hubs. With its small frame, the XIS-6040 maintains high mobility, but with a wider tunnel size for varied application.

With a powerful 160kV generator, the XIS-6040 provides crisp, high resolution images due to its advanced software and superior processing technology.

General Specifications

- **tunnel size (W x H):** 60 cm x 40 cm
- **dimensions (L x W x H):** 142 cm x 84.9 cm x 125.5 cm
- **X-ray generator:** 160kV, Operating at 150kV

Looking for a solution for your security challenge?

← [Back to partner](#)



Security Detection › X-ray Inspection

XIS-6040M - Astrophysics

The XIS-6040M (Mobile) is an X-Ray Inspection System with tunnel dimensions of 60 x 40 cm. The XIS-6040M is specifically designed for easy internal relocation at prisons, ships, banks, courthouses, government facilities and other high security checkpoints where rapid deployment and quick system operation is essential.



The XIS-6040M x ray inspection system features heavy duty pneumatic wheels, stainless steel handle bars and a lockable operator control panel which folds seamlessly into the system when not in use.

The XIS-6040M includes a powerful 160kV generator, and a design that enables fast maneuvering for an immediate screening solution.

General Specifications XIS-6040M

- **tunnel size (W x H):** 60 cm x 40 cm
- **dimensions (L x W x H):** 142 cm x 84.9 cm x 136.7 cm
- **X-ray generator:** 160kV, Operating at 150kV

← [Back to partner](#)



Security Detection › X-ray Inspection

XIS-6040N - Astrophysics

The XIS-6040N X-Ray Inspection System features a tunnel opening of 60 cm x 40 cm. The XIS-6040N offers a compact design with increased dimensions for a wider range of placement and expanded screening capability. The XIS-6040N is slightly narrower than our XIS-6040 and is ideal for both small parcel and checkpoint screening.



The XIS-6040N has been placed at hotels, prisons, government sites and transportation hubs. With its small frame, the XIS-6040N maintains high mobility, but with a wider tunnel size for varied application.

With a powerful 160kV generator, the XIS-6040N provides crisp, high resolution images due to its advanced software and superior processing technology.

All Astrophysics X-ray Inspection Systems are equipped with Real-Time Diagnostics, a unique Astrophysics feature which allows users to monitor system health. This software was specifically engineered to save you valuable time and money. If requested, Astrophysics would also be able to connect to your system and troubleshoot any issues remotely.

An exclusive Astrophysics option is our 6 Color Imaging, which enables operators to view screened objects in 6 colors, each color correlating to a specific range of Atomic Z-Numbers. 6 Color Imaging enables operators to achieve optimal material identification which improves throughput.

General Specifications XIS-6040N

- **tunnel size (W x H):** 60 cm x 40 cm
- **dimensions (L x W x H):** 141.2 cm x 80.9 cm x 124.5 cm
- **X-ray generator:** 160kV, Operating at 150kV

← [Back to partner](#)



Security Detection › X-ray Inspection

XIS-6040NM - Astrophysics

The XIS-6040NM (Mobile) X-Ray Inspection System features a tunnel opening of 60 cm x 40 cm. The XIS-6040NM offers a narrow mobile design for easy internal relocation through tighter corridors and spaces. The XIS-6040NM is ideal for both small parcel and checkpoint screening.



The XIS-6040NM has been placed at hotels, prisons, government sites and transportation hubs. With its small frame, the XIS-6040NM maintains high mobility, but with a wider tunnel size for varied application.

With a powerful 160kV generator, the XIS-6040NM provides crisp, high resolution images due to its advanced software and superior processing technology.

All Astrophysics X-ray Inspection Systems are equipped with Real-Time Diagnostics, a unique Astrophysics feature which allows users to monitor system health. This software was specifically engineered to save you valuable time and money. If requested, Astrophysics would also be able to connect to your system and troubleshoot any issues remotely.

An exclusive Astrophysics option is our 6 Color Imaging, which enables operators to view screened objects in 6 colors, each color correlating to a specific range of Atomic Z-Numbers. 6 Color Imaging enables operators to achieve optimal material identification which improves throughput.

General Specifications XIS-6040NM

- **tunnel size (W x H):** 60 cm x 40 cm
- **dimensions (L x W x H):** 141.2 cm x 80.9 cm x 133.7 cm
- **X-ray generator:** 160kV, Operating at 150kV

← [Back to partner](#)



Security Detection › X-ray Inspection

XIS-5335S - Astrophysics

The XIS-5335S is a small yet powerful X-Ray Inspection System with a tunnel size of 53.3 x 35.4 cm. The XIS-5335S is the ideal system for screening small scale objects with increased penetration, revealing liquid explosives, IEDs, contraband, narcotics and weapons.



The system is equipped with a high energy 160kV generator which provides advanced image quality and unrivaled penetration. Likewise, with such a small footprint, the XIS-5335S can fit through most doorways and elevators for fast relocation and installation.

The XIS-5335S has been placed at government facilities including embassies, courthouses, and schools, as well as corporate mailrooms, banks, hotels and medical centers.

General Specifications

- **tunnel size (W x H):** 53.3 cm x 35.4 cm
- **dimensions (L x W x H):** 132 cm x 76.2 cm x 123 cm
- **X-ray generator:** 160kV, Operating at 150kV

Looking for a solution for your security challenge?

← [Back to partner](#)



[Security Detection](#) › [X-ray Inspection](#)

XIS-6040SE (Event Edition) - Astrophysics

The XIS-6040SE (Event Edition) is specially designed for immediate use and optimal ease of use. The baggage scanner is ready for use within a few minutes. This makes this X-ray baggage scanner optimal for use in events such as festivals, congresses and other places where direct employability is important.



The X-Ray Inspection System features a tunnel opening of 60.0 cm x 40.0 cm (23.6" x 15.7"). The XIS-6040SE offers a compact design with increased dimensions for a wider range of placement and expanded screening capability. The XIS-6040SE is ideal for both small parcel and checkpoint screening. The datasheet is not available at the moment. Do you want further information? Please contact PEO security and we will provide you the latest details.

Product highlights

- Enhanced Imaging™ (EI) Software
- Compact footprint
- Mobility package for easy relocation
- Spill-resistant conveyor belt
- High-resolution images with 24-bit color
- Enhanced material discrimination
- Windows Operating System with Intel® Core™ Processor
- Real-time diagnostics
- High-contrast image analysis



← [Back to partner](#)



Security Detection › X-ray Inspection

XIS-6545 - Astrophysics

The XIS-6545 is the ultimate X-Ray Inspection System with a tunnel opening of 65.1 x 45.4 cm. Designed for small to medium sized objects, the XIS-6545 is the first product ever manufactured by Astrophysics and is characterized by its reliability, optimal dimensions and effective threat detection.



The XIS-6545 x ray inspection system boasts a diverse application range from courthouses, prisons, hospitals, and airport checkpoints. With a standard 160kV generator, the XIS-6545 is also available for upgrade to a 180kV generator for enhanced penetration.

Among the most commonly sold XIS units, it is a quality checkpoint system featuring Astrophysics superior XIS software and maximized throughput.

General Specifications XIS-6545

- **tunnel size (W x H):** 65.1 cm x 45.4 cm
- **dimensions (L x W x H):** 216.4 cm x 87.3 cm x 131.6 cm
- **X-ray generator:** 160kV, Operating at 150kV

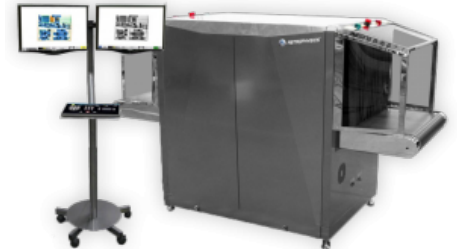
← [Back to partner](#)



[Security Detection](#) › [X-ray Inspection](#)

6545VI - Astrophysics

The 6545VI is undoubtedly the high performance system in its class. The 6545VI has an upgraded frame with stainless steel accents, tunnel extensions, and service friendly paneling, complete with a Mobile Monitor Stand for a sleek new aesthetic.



With advanced VI software, dual 22" Jitter Free Monitors and a 180 kV generator, the 6545VI generates high definition images with unparalleled clarity and penetration. This technology increases screening reliability and optimizes detection accuracy and throughput.

The 6545VI x ray scanner integrates advanced threat detection, user-friendly interface, mobility and inspired design for an overall high quality system.

X-Ray Generator

Voltage: 180kV, operating at 165kV

Computer

- processor: Intel® Core i7 2.93 GHz 8MB cache
- memory: 4 GB RAM at 1333 MHz
- platform: Windows® 7
- backup: uninterrupted power supply (full system operation- 3 min)

Monitor

Display Type: dual 22" LCD color monitors (Jitter Free)

General Specifications 6545VI

- **tunnel size (W x H):** 65.1 cm x 45.4 cm
- **dimensions (L x W x H):** 217.2 cm x 95.2 cm x 131 cm
- **X-ray generator:** 180kV, operating at 165kV

← [Back to partner](#)



Security Detection › X-ray Inspection

VI7 - Astrophysics

With a tunnel opening of 62.1 cm x 41.7 cm (W x H) and a single 180kV generator, the VI7 generates a series of 7 high quality images of the screened object, each showcasing a different angle.



The VI7 features a display that rotates through 7 views, each showing the same bag from a distinctive, unique vantage point. It therefore enhances the operator's 3D awareness and overall depth perception. Items that may have been hidden in one view become clearly visible in another.

The VI7 "surround view" technology successfully heightens the operator's image interpretation and object identification while speeding throughput and reducing the need for a secondary search.

Developed with funding from the DHS Science and Technology Directorate, under technical direction of the Transportation Security Laboratory Human Factors Program.

General Specifications VI7

- **Tunnel Size (W x H):** 62.1 cm x 41.7 cm
- **Dimensions (L x W x H):** 274.0 cm x 120.0 cm x 153.3 cm
- **X-ray Generator:** 180kV, Operating at 165kV

← [Back to partner](#)

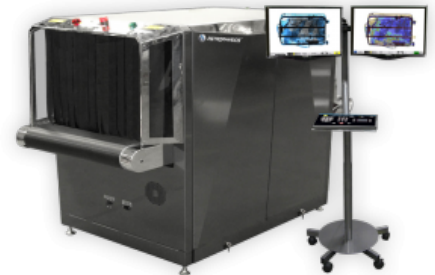


Security Detection › X-ray Inspection

7858VI - Astrophysics

The 7858VI combines the VI Series performance with a larger screening capacity. The 7858VI has a dynamic look with a stainless steel frame panels and a Mobile Monitor Stand, complimented by an impressive suite of software and hardware advancements for unrivaled image manipulation and quality.

With its ideal design, the 7858VI maximizes baggage and small parcel screening with a minimized system profile. Matched with VI Series technology and a standard 180 kV generator, the 7858VI boasts heightened material identification and increased throughput. The 7858VI is your solution to sleek screening of larger objects with fast and accurate threat detection.



X-Ray Generator

- voltage: 180kV, Operating at 165kV

Computer

- processor: Intel Core i7 2.93 GHz 8MB cache
- memory: 4 GB RAM at 1333 MHz
- platform: Windows 7
- backup: uninterrupted power supply (full system operation- 3 min)

Monitor

- display type: dual 22" LCD color monitors (jitter free)

General Specifications

- **tunnel size (W x)H:** 77.5 cm x 58.3 cm cm
- **dimensions (L x W x H):** 188 cm x 103 cm x 139.4 cm
- **X-ray generator:** 180kV, operating at 165kV

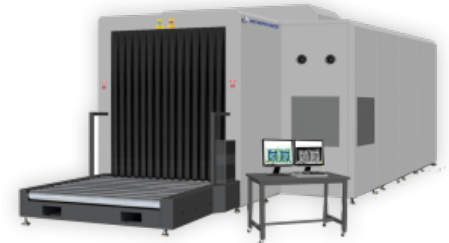
← [Back to partner](#)



[Security Detection](#) › [X-ray Inspection](#)

XIS-1517DV 320kV - Astrophysics

The XIS-1517DV 320kV is an advanced X-Ray Inspection System with a tunnel opening of 152.4 cm x 170.2 cm. The XIS-1517DV 320kV utilizes both dual view technology and high powered generators for improved image screening and increased penetration. The XIS-1517DV 320kV was specifically designed for in-depth screening clarity of customs and military cargo.



The XIS-1517DV 320kV has a low conveyor height of just 35.6 cm and can support 3000 kg of cargo without compromising throughput speed, adding to the efficiency and security of any facility or transport hub. The XIS-1517DV 320kV is a quality XIS unit that offers the most cutting edge technology in cargo security.

All Astrophysics X-ray Inspection Systems are equipped with Real-Time Diagnostics, a unique Astrophysics feature which allows users to monitor system health. This software was specifically engineered to save you valuable time and money. If requested, Astrophysics would also be able to connect to your system and troubleshoot any issues remotely.

An exclusive Astrophysics option is our 6 Color Imaging, which enables operators to view screened objects in 6 colors, each color correlating to a specific range of Atomic Z-Numbers. 6 Color Imaging enables operators to achieve optimal material identification which improves throughputs.

General Specifications XIS-1517DV 320kV

- **Tunnel Size (W x H):** 152.4 cm x 170.6 cm
- **Dimensions (L x W x H):** 1116.4 cm x 281.3 cm x 304.8 cm
- **X-ray Generator:** 320kV

← [Back to partner](#)



Security Detection › X-ray Inspection

XIS-1517DV 200kV - Astrophysics

The XIS-1517DV 200kV is an advanced X-Ray Inspection System with a tunnel opening of 150 x 170.2 cm. The XIS-1517DV 200kV utilizes both dual view technology and high powered generators for improved image screening and increased penetration.



The XIS-1517DV 200kV advanced x ray inspection system was specifically designed for in-depth screening clarity of customs and military cargo.

It has a low conveyor height of just 38.3 cm and can support 2000 kg (4410 lbs) of cargo without compromising throughput speed, adding to the efficiency and security of any facility or transport hub. The XIS-1517DV 200kV is a quality XIS unit that offers the most cutting edge technology in cargo security. *Also available with a generator output of 180kV or 320kV.

General Specifications XIS-1517DV 200kV

- **Tunnel Size (W x H):** 150 cm x 170.2 cm
- **Dimensions (L x W x H):** 792.2 cm x 259.1 cm x 286 cm
- **X-ray Generator:** Dual 200kV

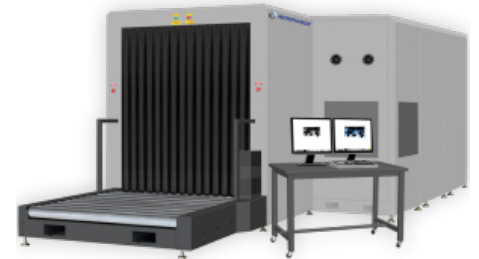
← [Back to partner](#)



[Security Detection](#) › [X-ray Inspection](#)

XIS-1517 320kV - Astrophysics

The XIS-1517 320kV is a high penetration X-Ray Inspection System with a tunnel opening of 150.9 x 170.6 cm. It utilizes advanced imaging technology and high powered generators for heightened image screening. The XIS-1517 320kV was specifically designed for in-depth screening clarity of customs and military cargo.



The XIS-1517 320kV has a low conveyor height of just 40 cm and can support 2000 kg of cargo without compromising throughput, adding to the efficiency and security of any facility or transport hub.

The XIS-1517 320kV high penetration x ray is a quality XIS unit that offers the most cutting edge technology in cargo security.

General Specifications XIS-1517 320kV

- **Tunnel Size (W x H):** 150.9 cm x 170.6 cm
- **Dimensions (L x W x H):** 1095.6 cm x 278.8 cm x 292 cm
- **X-ray Generator:** 320kV

← [Back to partner](#)



Security Detection › X-ray Inspection

XIS-1517 200kV - Astrophysics

The XIS-1517 200kV is the premier heavy duty X-Ray Inspection System with a tunnel opening of 150 cm x 170.2 cm. The XIS-1517 200kV is especially designed for screening crates, cargo and pallet sized objects at all security sites, including airports and customs locations.



With a low conveyor height of just 38.3 cm above floor level, loading and unloading of heavy freight is simple. With a 200kV generator, the XIS-1517 200kV boasts superior penetration.

This heavy duty x ray system consistently delivers high quality imaging and outstanding performance. The XIS-1517 200kV is your solution to advanced cargoscreening.

*Also available with a generator output of 180kV or 320kV.

General Specifications XIS-1517 200kV

- **Tunnel Size (W x H):** 150 cm x 170.2 cm
- **Dimensions (L x W x H):** 670.3 cm x 259.1 cm x 225 cm
- **X-ray Generator:** 200kV

← [Back to partner](#)



[Security Detection](#) › [X-ray Inspection](#)

XIS-100XDV-MD - Astrophysics

Designed for high-threat security, the modular XIS-100XDV MD is a dual view X-Ray Inspection System with a generous tunnel size of 101.0 cm x 101.5 cm. Based on our standard XIS-100XDV, the MD (modular design) version is built in separate modules, each with their own set of casters to allow for easy installation and integration into facilities where space may be an issue.



Boasting two x-ray generators, the XIS-100XDV MD produces two screening perspectives and allows operators to manipulate each independently, thus enhancing the operator's ability to identify potential security threats with increased accuracy and speed. The XIS-100XDV MD is the ultimate solution for large object screening at inspection sites requiring heightened security protection.

General Specifications XIS-100XDV-MD

- Tunnel Size (W x H): 101.0 cm x 101.5 cm
- Dimensions (L x W x H): 380.7 cm x 165.4 cm x 182.2 cm
- X-ray Generator: Dual 180kV, Operating at 165kV

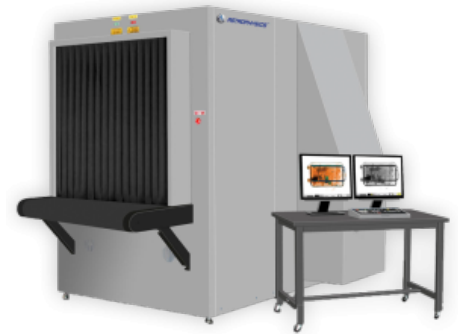
← [Back to partner](#)



Security Detection › X-ray Inspection

XIS-100XDV - Astrophysics

Designed for high-threat security, the XIS-100XDV is a dual view X-Ray Inspection System with a generous tunnel size of 101.6 x 101.6 cm. The XIS-100XDV is well-suited for airports, military and government sites.



Boasting two x-ray generators, it produces two screening perspectives and allows operators to manipulate each independently. Thus, the XIS-100XDV enhances operator's ability to identify potential security threats with increased accuracy and speed.

Combined with dual view technology and Astrophysics software, the XIS-100XDV dual view x ray is the ultimate solution for large object screening at inspection sites requiring heightened security protection.

General Specifications XIS-100XDV

- **Tunnel Size (W x H):** 101.6 cm x 101.6 cm
- **Dimensions (L x W x H):** 313.4 cm x 173.4 cm x 195.9 cm
- **X-ray Generator:** Dual 180kV, Operating at 165kV

← [Back to partner](#)



Security Detection › X-ray Inspection

XIS-100XDX - Astrophysics

The XIS-100XDX is the newest Dual View X-Ray Inspection System featuring a tunnel size of 100 x 100 cm (39.4" x 39.4"). The XIS-100XDX dual view x ray combines dual view technology with a low conveyor height of just 30 cm (12") for optimal heavy object screening.



Dual View technology utilizes two generators, creating two image perspectives. Coupled with 6 Color Imaging, dual view technology enables operators to increase image manipulation and object recognition.

The XIS-100XDX's low conveyor design and dual view detection enable operators to quickly scan heavy objects without any loss in threat detection accuracy.

General Specifications XIS-100XDX

- **Tunnel Size (W x H):** 100 cm x 100 cm/ 39.4" x 39.4"
- **Dimensions (L x W x H):** 312 cm x 183.2 cm x 188.6 cm/ 123" x 72.1" x 74.2"
- **X-ray Generator:** Dual 180kV, Operating at 165kV

← [Back to partner](#)



Security Detection › X-ray Inspection

XIS-1818DV 320kV - Astrophysics

The XIS-1818DV 320kV is an advanced X-Ray Inspection System with a tunnel opening of 181 cm x 180.7 cm. The XIS-1818DV 320kV utilizes both dual view technology and high powered generators for improved image screening and increased penetration.



This advanced x ray inspection system was specifically designed for in-depth screening clarity of customs and military cargo. The XIS-1818DV 320kV has a low conveyor height of just 34.4 cm and can support 3000 kg of cargo without compromising throughput speed, adding to the efficiency and security of any facility or transport hub. The XIS-1818DV 320kV is a quality XIS unit that offers the most cutting edge technology in cargo security.

General Specifications XIS-1818DV 320kV

- **Tunnel Size (W x H):** 181 cm x 180.7 cm
- **Dimensions (L x W x H):** 1116.4 cm x 310.5 cm x 314.3 cm
- **X-ray Generator:** Dual 320kV

← [Back to partner](#)



Security Detection › X-ray Inspection

XIS-100XD - Astrophysics

The XIS-100XD is a redesigned 100X with a tunnel size of 100 x 100 cm. With a repositioned 180kV generator, the XIS-100XD has a low conveyor height of just 30 cm, enabling heavy objects to be easily loaded on and off the conveyor.



Due to its easy loading design, the XIS-100XD heavy parcel inspector has found placement at airports, courthouses, customs facilities and hotels, but is ideal for all heavy parcel inspection.

The XIS-100XD is the epitome of technological innovation for its increased convenience and efficiency. It offers optimized technology, large tunnel dimensions and minimum inspection time.

General Specifications XIS-100XD

- **Tunnel Size (W x H):** 100 cm x 100 cm
- **Dimensions (L x W x H):** 236.7 cm x 127.5 cm x 190.9 cm
- **X-ray Generator:** 180kV, Operating at 165kV

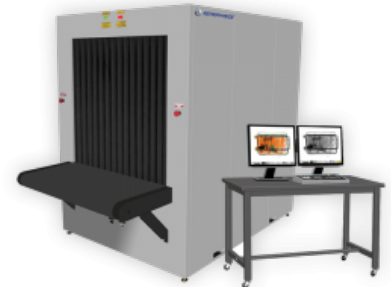
← [Back to partner](#)



Security Detection › X-ray Inspection

XIS-100X - Astrophysics

The XIS-100X is a versatile X-Ray Inspection System with a tunnel size of 101.6 x 101.3 cm. The XIS-100X is designed for screening oversized luggage, large parcels and small cargo.



One of the most desired systems in the XIS Series, it is a flexible, mid-sized system that offers diverse screening capabilities. The XIS-100X x ray inspection system retains high throughput while providing a bigger tunnel size for larger scale object screening. Thus, the system offers improved efficiency for medium sized screening needs.

Ultimately, the XIS-100X is the cost effective screening solution for airports, customs facilities, and high security sites.

General Specifications XIS-100X

- **Tunnel Size (W x H):** 101.6 cm x 101.3 cm
- **Dimensions (L x W x H):** 277.5 cm x 137.2 cm x 191.9 cm
- **X-ray Generator:** 180kV, Operating at 165kV

← [Back to partner](#)



Security Detection › X-ray Inspection

XIS-1818DV 200kV - Astrophysics

The XIS-1818DV 200kV is a high capacity X-Ray Inspection System with extended tunnel dimensions 180.3 cm x 180.5 cm. The XIS-1818DV 200kV utilizes dual 200kV sources to generate two independent perspectives for large cargo and pallet inspection at airports and seaports.



Featuring a heavy duty roller bed and rugged construction, the XIS-1818 can support 3000 kg. The XIS-1818 200kV high capacity x ray inspection system consistently delivers outstanding performance and retains a high throughput value.

Matched with Astrophysics exclusive software and superior technology, the XIS-1818 200kV is the quality system for your large scale screening needs. *Also available with a generator output of 180kV or 320kV.

General Specifications XIS-1818DV 200kV

- **Tunnel Size (W x H):** 180.3 cm x 180.5 cm
- **Dimensions (L x W x H):** 853.1 cm x 289.6 cm x 316.6 cm
- **X-ray Generator:** Dual 200kV

← [Back to partner](#)



[Security Detection](#) › [X-ray Inspection](#)

XIS-1818 320kV - Astrophysics

The XIS-1818 320kV is a high performance X-Ray Inspection System with tunnel dimensions 181 cm x 180.7 cm. The XIS-1818 320kV is primarily designed for military, government and cargo use for advanced high security screening.



With the addition of the high powered 320 kV generator, the XIS-1818 320kV high performance x ray inspection system delivers advanced penetration for improved object recognition with increased clarity and unprecedented image quality.

With a low conveyor height and heavy duty roller bed, the XIS-1818 320kV provides optimized large scale screening with unmatched penetration for precision accuracy.

General Specifications XIS-1818 320kV

- **Tunnel Size (W x H):** 181 cm x 180.7 cm
- **Dimensions (L x W x H):** 995.8 cm x 310.5 cm x 240 cm
- **X-ray Generator:** 320kV

← [Back to partner](#)



Security Detection › X-ray Inspection

XIS-1080D - Astrophysics

The XIS-1080D is an advanced X-Ray Inspection System that offers tunnel dimensions of 101 x 80 cm. Significantly, with a low conveyor height of just 30 cm, it facilitates fast loading and is well suited for heavy object screening.



With a redesigned XIS-1080 frame, the XIS-1080D embodies efficiency and ease of use for operators. The XIS-1080D boasts reliability and increased throughput rate due to its convenient conveyor height.

Moreover, the XIS-1080D x ray inspection system is the smallest of the XIS Series for medium capacity screening and is ideally suited for locales with high congestion, limited system space and heavy object screening.

General Specifications XIS-1080D

- **Tunnel Size (W x H):** 101 cm x 80 cm
- **Dimensions (L x W x H):** 236.6 cm x 127.5 cm x 171.7 cm
- **X-ray Generator:** 180kV, Operating at 165kV

← [Back to partner](#)



Security Detection › X-ray Inspection

XIS-1080 - Astrophysics

The XIS-1080 is a mid-size X-Ray Inspection System with a tunnel opening of 101.6 x 81.4 cm. The XIS-1080 is designed for screening standard and oversized baggage, dolly-sized crates and larger scale objects.



The XIS-1080 is the ideal system to screen larger capacity objects while also retaining a limited system size. With a heavy duty conveyor belt, the system can support an unprecedented weight of 200 kg (440 lbs) at any given time, thus allowing for heavier object screening.

Ultimately, the XIS-1080 x ray inspection system is your secure screening solution for high-congestion sites with limited space, and crucial mid-sized screening needs.

General Specifications XIS-1080

- **Tunnel Size (W x H):** 101.6 cm x 81.4 cm
- **Dimensions (L x W x H):** 257.4 cm x 137.2 cm x 170.6 cm
- **X-ray Generator:** 180kV, Operating at 165kV

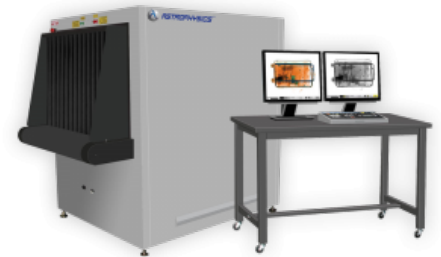
← [Back to partner](#)



Security Detection › X-ray Inspection

XIS-7858 - Astrophysics

The XIS-7858 is a uniquely engineered X-Ray Inspection System with a tunnel size of 78 x 58.3 cm. The XIS-7858 is designed to provide maximum object screening with a minimized system profile. The XIS-7858 is well-suited for hotels, corporate sites, government offices, mailrooms, and airports.



The XIS-7858 is the largest XIS Series system for small parcel capacity. The XIS-7858 features a standard 180kV generator for heightened penetration and enhanced object recognition.

The XIS-7858 small parcel screening x ray is the ideal screening solution for any location in need of increased screening dimensions within a consolidated space.

General Specifications XIS-7858

- **tunnel size (W x H):** 78 cm x 58.3 cm
- **dimensions (L x W x H):** 188 cm x 103 cm x 139.4 cm
- **X-ray generator:** 180kV, operating at 165kV

← [Back to partner](#)



Security Detection › X-ray Inspection

XIS-7555R - Astrophysics

The new XIS-7555R is Astrophysics' exclusive ruggedized, self-contained system. Designed and tested specially for outdoor use, there is no other system like it. The frame is completely made of stainless steel, powder coated with a special anti-corrosion formula and bulb-sealed to be water-resistant, making the XIS-7555R deployable anywhere. It is an ideal security screening solution for maritime environments, deserts, and other harsh outdoor conditions.



With a tunnel size of 75.6 cm x 55.2 cm, the XIS-7555R is designed to provide maximum object screening with a minimized system profile. The XIS-7555R features a standard 180kV generator for heightened penetration and enhanced object recognition.

The XIS-7555R is transportable and equipped with shock absorbing pads to endure rough surfaces. It has been tested in our lab for extreme temperatures and situations. From sandstorms to torrential storms, the XIS-7555R is engineered to last and provide screening under the most rigid extremes.

General Specifications XIS-7555R

- **tunnel size (W x H):** 75.6 cm x 55.2 cm
- **dimensions (L x W x H):** 189.7 cm x 106.3 cm x 164.3 cm
- **X-ray generator:** 180kV, operating at 165kV

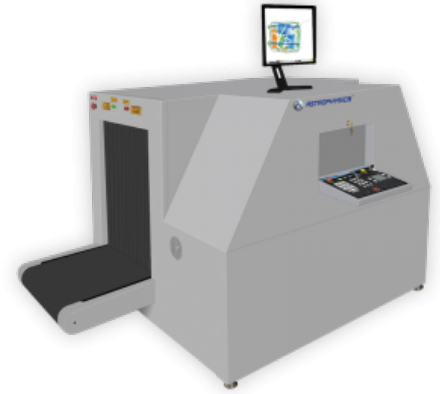
← [Back to partner](#)



Security Detection › X-ray Inspection

XIS-5878 - Astrophysics

The XIS-5878 X-Ray Inspection System has tunnel dimensions of 58.4 x 78.3 cm. It features a low conveyor height of 30 cm to expedite the loading and unloading of screening objects. The XIS-5878 is well suited for airports, government facilities, and sites with heavy inspection parcels.



The XIS-5878 x ray inspection system has unmatched efficiency in a compact frame. It supports 165 kg (360 lbs) and includes a standard 180kV generator for increased penetration capabilities.

With a convenient conveyor height and high performance technology, the XIS-5878 is ideal for security sites where screening of wheeled or heavy objects is required.

General Specifications XIS-5878

- **tunnel Size (W x H):** 58.4 cm x 78.3 cm
- **dimensions (L x W x H):** 252.4 cm x 137.1 cm x 126 cm
- **X-ray generator:** 180kV, operating at 165kV

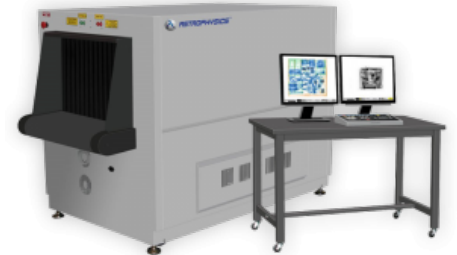
← [Back to partner](#)



[Security Detection](#) › [X-ray Inspection](#)

XIS-6545DV - Astrophysics

The XIS-6545DV is a dual view X-Ray Inspection System with tunnel dimensions 65 x 45 cm. Designed for high threat security locales, the XIS- 6545DV is ideal for airports, government, facilities, ports, hospitals, and banks.



The XIS-6545DV features dual X-Ray generators to create two different image perspectives which can be manipulated independently. By utilizing dual view technology, alongside 6 Color Imaging and Atomic Z-Number Measurement, the XIS-6545DV provides unparalleled threat identification.

Ultimately, the XIS-6545DV dual view x ray maximizes throughput and enhances detection in locations where time efficiency and high security screening is crucial.

General Specifications XIS-6545DV

- **tunnel size (W x H):** 65 cm x 45 cm
- **dimensions (L x W x H):** 213 cm x 106.4 cm x 129 cm
- **X-ray generator:** Dual 180kV, Operating at 165kV

Looking for a solution for you security challenge?

← Back to partner



Security Detection › X-ray Inspection

XIS-6040 VI-3D small parcel scanner(Semi-3D)

The XIS-6040 VI-3D small parcel scanner features a display that rotates through three views, each from a different vantage point. With a unique 3D View experience, this model enhances operator depth perception and object visibility to eliminate blind spots.

The machine has a tunnel opening of 62,1 cm x 42 cm (23,63" x 16,54") and a 180kV generator, so it is a compact and powerful system. It is ideal for screening small to medium size parcels.

This Astrophysics screening system is useful in multiple fields, such as transportation, ports & borders and critical infrastructure.



This machine has stainless steel accents that accentuate the 6040 VI-3D technology. It also boasts a large, high quality image for enhanced threat detection with a 24" LCD color monitor. Because of the (semi) 3D imaging, it reduces blind spots.

XIS-6040 VI-3D SMALL PARCEL SCANNER FEATURES

- Stainless steel frame accents
- High definition LCD monitor
- Intel iCore 7 processor
- Windows 7 operating system
- Displays images "rocking" three views
- 6-colour imaging
- Baggage counter
- Choice between colour, or black & white imaging
- Heavy duty roller casters
- Reduces blind spots

If you want to read more about Astrophysics screening systems, read [this PEO article](#), or click [here](#)!



← [Back to partner](#)



Security Detection › X-ray Inspection

XIS-1819 200kV - Astrophysics

The XIS-1819 200kV is a high capacity X-Ray Inspection System with extended tunnel of 180.3 cm x 190 cm. The XIS-1819 200kV is designed for large cargo and pallet inspection at airports and seaports, but is ideal for any location where large scale security screening is required.



Featuring a heavy duty roller bed and rugged construction, the XIS-1819 200kV can support 2000 kg. It consistently delivers outstanding performance and retains a high throughput value.

Matched with Astrophysics exclusive software and superior technology, the XIS-1819 200kV advanced x ray inspection machine is the quality system for your large scale screening needs.

General Specifications XIS-1819 200kV

- **Tunnel Size (W x H):** 180.3 cm x 190 cm
- **Dimensions (L x W x H):** 765.4 cm x 332.1 cm x 233 cm
- **X-ray Generator:** 200kV

← [Back to partner](#)



Security Detection › X-ray Inspection

XIS-1818 200kV - Astrophysics

The XIS-1818 200kV is a high capacity X-Ray Inspection System with extended tunnel dimensions 180.3 cm x 180.5 cm. The XIS-1818 is designed for large cargo and pallet inspection at airports and seaports, but is ideal for any location where large scale security screening is required.



Featuring a heavy duty roller bed and rugged construction, the XIS-1818 200kV can support 2000 kg. The XIS-1818 200kV consistently delivers outstanding performance and retains a high throughput value.

Matched with Astrophysics exclusive software and superior technology, the XIS-1818 200kV is the quality system for your large scale screening needs. *Also available with a generator output of 180kV or 320kV.

General Specifications XIS-1818 200kV

- **Tunnel Size (W x H):** 180.3 cm x 180.5 cm
- **Dimensions (L x W x H):** 670.3 cm x 289.5 cm x 235.2 cm
- **X-ray Generator:** 200kV

← [Back to partner](#)



Security Detection > X-ray Inspection

HXC-320 - Astrophysics

The Astrophysics HXC-320 Vehicle Scanner is specifically designed to scan cars and motor vehicles with a height of 2.7 meters and a width of 2.6 meters. The HXC-320 scans vehicles to identify hidden contraband, such as smuggled goods, explosives, narcotics and weapons. The HXC-320 has a 320kV X-ray generator that allows the car scanner to operate as a drive-through portal, without the need to unload drivers and passengers. Its' easy process, automated operation and high throughput, reduce the need for manual inspection and locations experiencing high volume traffic will experience lower backlog and delays.



The HXC-320 is an efficient and customizable solution for the protection and inspection of critical infrastructure locations such as government facilities, military checkpoints, sporting events, and land and sea borders. Several installation options are available: in-ground installation eliminating the need for a ramp, and a conveyor system for unmanned vehicles if a pull-through operation is preferred.

[← Back to partner](#)



Security Detection › X-ray Inspection

HXP - Astrophysics

Goods are imported and exported all over the world every day. In order to protect our ports, airports and border crossings against threats, government entities need to be able to quickly search through trucks and containers without delaying commerce.



Astrophysics is dedicated to helping agencies such as border patrol, customs, and police, to detect contraband, weapons, explosives, fraudulent trade items, and other security threats. Our HXP is used to inspect trucks, containers and vehicles for these threats as well as the verifications of manifests. With an easy drive-through process, automated operation and high throughput, the need for manual inspection is reduced and high-volume cargo inspection locations will not be set back.

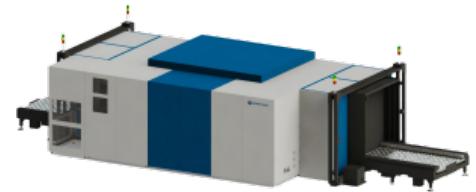
The HXP allows drivers to safely remain in their truck cabin, as the scanning process does not start until after the driver has passed the point where the X-ray has emitted. The automated scanning procedure provides simplicity and speed, allowing staff to focus on other important duties, therefore increasing productivity.

While there are other cargo and vehicle inspection solutions available such as a Gantry or Mobile Scanner, the High Energy X-ray Portal Scanner has the least cost of ownership, easy maintenance, and highest throughput among several other major benefits.



Multi-View CT System: MVCT Cargo and Pallet Inspection Scanner

The Astrophysics Multi-View CT (MVCT) is a unique, breakthrough solution for screening medium-to-high density cargo. By combining two complementary techniques, radiography and tomography, this high-powered system allows freight forwarders, airlines, and government agencies to perform rapid and effective cargo inspections.



The MVCT is a disruptive technology offering a significant advance in cargo inspection and security screening.

Features & Benefits

- **450kV Generator:** A potent X-ray source provides high penetration and contrast screening of dense cargo.
- **Multiple-View Mode:** The MVCT provides 7 X-ray views after each pass through the scan tunnel. Scanning only 1 pass (7 images) can process 60 pallets per hour. Optional multi-pass scanning can provide up to 35 images per pallet, giving a rotational image of 225°.
- **Computed Tomography (CT) Mode:** To inspect complex, cluttered, and even non-homogeneous cargo, the MVCT can combine data from up to 5 multi-view passes to reconstruct a 3D CT image for review. Operators can rotate the image a full 360° to view the entire pallet, or select and view individual slices in <1 cm increments on the coronal (front-to-back), axial (top-to-bottom), and sagittal (left-to-right) planes. CT screening can process 20 pallets per hour.
- **Unparalleled Image Quality:** The clarity of the radiographic and tomographic images allows operators to identify threats in any location within the cargo. Advanced imaging software enables operators to rotate the cargo on-screen (in 3D) and apply additional filters to maximize screening results.
- **Compelling Return on Investment:** High-quality images lead to fewer false alarms and reduce the need for break-bulk screening. This in turn reduces labor costs and increases productivity, generating a significant return on investment within the first year.

General specifications:

- tunnel Size: 125.7 cm x 170.2 cm (W x H);
- system Dimensions: 1260 cm x 453 cm x 296 cm (L x W x H);
- max Cargo Dimensions: 121.9 cm x 121.9 cm x 165.1 cm (L x W x H);
- net Weight: 32,500 kg estimated (71,650 lbs);
- roller Bed Speed: 0.2 m/s (0.66 ft/s);
- roller Bed Capacity: 1600 kg (3527 lbs) Pallet;
- scan Duration (1 pass): 25 seconds;
- scan Duration (4 passes): 150 seconds;

- throughput (1 pass): Typical 60 pallets/hour;
- throughput (4 passes): Typical 20 pallets/hour.

Generator:

- voltage: 450kV;
- current, Power: 4.0 mA, 1.8kW;
- cooling: Oil cooling;
- beam Direction: Horizontal side-shooter, split into angled fan beams;
- detectors: 7 x 2432 Channels in L-Shaped Arrays. Would you like to view the complete specifications? Fill in the form below and download the datasheet![!JTVCZW1haWwtZG93bmxvYWQIMjBkb3dubG9hZF9pZCUzRCUyMjlzODg2JTlyJTlwY29udGFjdF9mb3JtX2lkJTNEJTlyMzc3OSUyMiU1RA==](https://www.oxford-instruments.com/peo-detection)